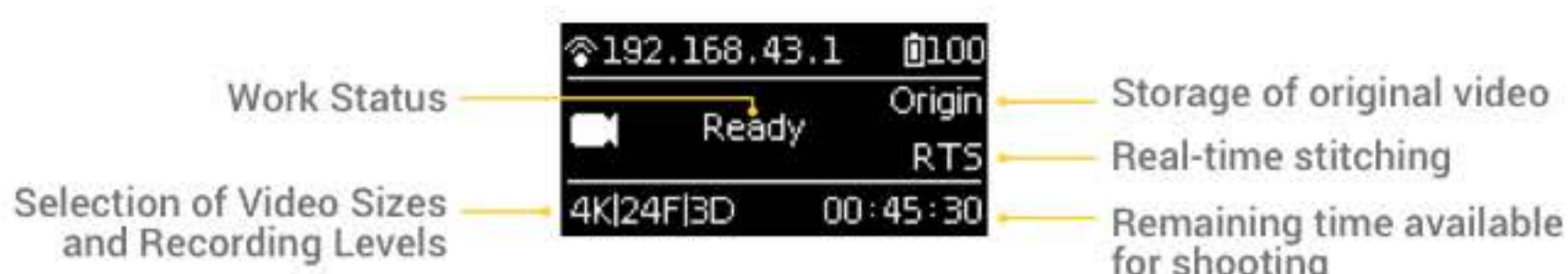


# How to use the video recording function of Insta360 Pro?

## Video Mode Screen



Press POWER key again during video recording and the recording will be stopped. If the real-time stitching level is needed, the camera will enter the processing state after the recording is stopped. After processing is done, the storage will be carried out, and then, the camera will be switched to VIDEO RECORDING READY state. The work indicating lamp will flash continuously during recording until the recording is completed and the video is stored. If the recording environment may be affected, turn off the LED in the setting function of the camera. There will be a sound indicating completion of recording when the video recording is completed.

If the remaining space is less than 1G, the recording will be automatically stopped and the current video will be saved. If you retry to start a video recording, you will see a prompt for insufficient storage space. Please replace the storage card with sufficient storage capacity.

If the camera's electricity quantity is too low during recording, it will prompt the battery is too low in electricity after completing the recording. Please connect the power adapter immediately or replace the battery with sufficient power. Otherwise, you can no longer proceed with the next shooting.

If there is an error prompt during the recording, it means that the operation is not completed properly, please refer to the relevant error instructions and get a solution (this requires that Wan Shun and Xiao Shen summarize the current archiving errors).

## Operation Instructions

Select the video mode from the homepage, press "POWER" key to confirm entering such mode. After the camera completes the preparation, the VIDEO RECORDING READY state will be displayed.

When the video recording mode is in VIDEO RECORDING READY state, press UP and DOWN keys to switch over the size levels for recording.

When the video recording mode is in VIDEO RECORDING READY state, press POWER key and you can start the recording as per the current size.

Note: If the storage device is used for the first time, the speed testing is required. The video recording proceed smoothly only after the speed is ensured to meet the standard.



## Video Sizes and Recording Levels

8K/30F– 8KPano@30fps, for shooting and storage of original video;

6K/3D/30F–6K3D@30fps, for shooting and storage of original video;

4K/120F – 4K@120fps, for shooting and storage of original video with high frame rate;

4K/3D/60F – 4K3D@60fps, for shooting and storage of original video with high frame rate;

4K/30F– 4KPano@30fps, for shooting and storage of original video and real-time stitching video;

4K/3D/24F – 4K3D@24fps, for shooting and storage of original video and real-time stitching video;

In addition, the Flat Color option can be turned on / off in the camera settings to determine whether to get more detailed content by shooting.

Customize –The user can quickly select the latest APP operation of this application, or the parameters stored by scanning the QR code. Refer to the section of instructions for scanning of QR code for details.

# How to use the live-streaming function of Insta360 Pro?

## 1. Push live-streaming broadcast-screen

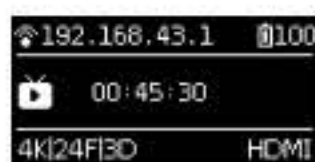


## 2. Operation instructions

Select the live video broadcast mode from the homepage, press "POWER" key to confirm entering such mode. After the camera completes the preparation, the LIVE VIDEO BROADCAST READY state will be displayed.

When the live video broadcast mode is in LIVE VIDEO BROADCAST READY state, press UP and DOWN keys to switch over the size levels for broadcasting.

When the live video broadcast mode is in LIVE VIDEO BROADCAST READY state, press POWER key to switch over the size levels for push stream live video broadcasting or for output live video broadcast via HDMI. Press POWER key again during live video broadcast and the broadcasting will be stopped. The work indicating lamp will flash continuously during live video broadcasting until the broadcasting is completed and the video is stored. If the broadcasting environment may be affected, turn off the LED in the setting function of the camera.



If the push stream is abnormally interrupted due to network abnormality during live video broadcasting, the camera will continue try to reconnect it without manually stopping the live video broadcast until the push stream live video broadcasting is recovered.



The user can set the push steam address through the client end, or set that the original video is stored locally while the live video broadcast is going on. Suppose it is set that the video is stored locally while the live video broadcast is going on, the abnormality that appears in the video recording may occur in this case.

If the camera's electricity quantity is too low during live video broadcast, it will automatically stop the live video broadcast and prompt the battery is too low in electricity. Please connect the power adapter immediately or replace the battery with sufficient power. Otherwise, you can no longer proceed with the next live video broadcast.

If there is an error prompt during the live video broadcast, it means that the operation is not completed properly, please refer to the relevant error instructions and get a solution (this requires that Wan Shun and Xiao Shen summarize the current archiving errors)

## 3. Push Stream Live Video Broadcast Size and Broadcasting Levels

4K/30F-4KPano@30fps, push stream for network live video broadcast. If the push steam address is not set, the internal push stream will be defaulted. It may be set through the client-end storage card that the original video is stored into the storage card while the live video broadcast is going on.

4K/3D30F- 4K3D@30fps, push stream for network live video broadcast If the push steam address is not set, the internal push stream will be defaulted. It may be set through the client-end storage card that the original video is stored into the storage card while the live video broadcast is going on.

However, the high frame rate will drop to 24fps, and the real-time video stitching may be achieved.

4K/30F HDMI — 4KPano@30fps, HDMI output signal. It may be set through the client-end storage card that the original video is stored into the storage card while the live video broadcast is going on.

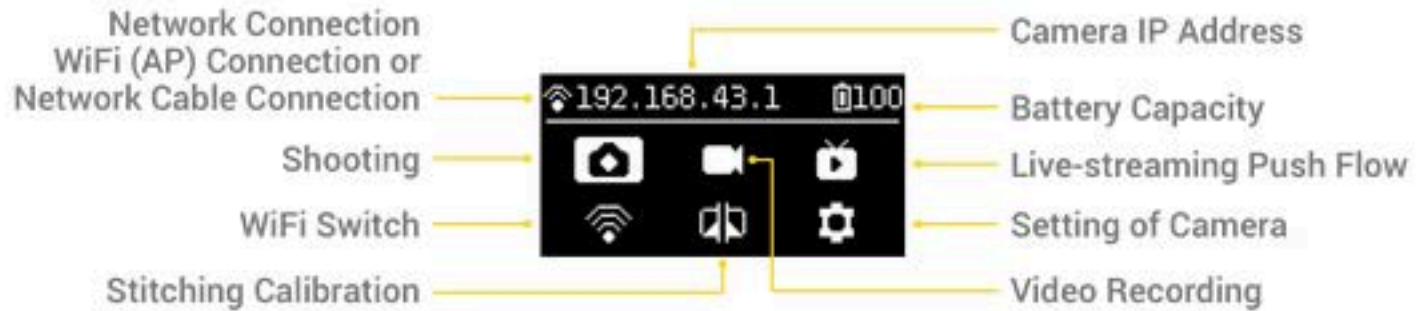
44K/3D/30F HDMI - 4K3D@30fps, HDMI HDMI output signal. It may be set through the client-end storage card that the original video is stored into the storage card while the live video broadcast is going on. However, the high frame rate will drop to 24fps, and the real-time video stitching may be achieved.

Aerial — aerial photo mode. In this mode, the 1920x960 HDMI panoramic images will be output to UAV for preview, and the original video with the resolution of 2560x1440 of each lens may be saved.

Customize -The user can quickly select the latest APP operation of this application, or the parameters stored by scanning the QR code.

# How to do stitching calibration?

Function navigation menu



**Stitching** The internal stitching effect of the camera depends on the specific shooting scene. For example, the effects obtained from a distant shot and a close shot are different. Therefore, the user may preview or take a trial shot to get some products, if the stitching effect (live broadcast or video real-time stitching) is not satisfying, this function may be used for calibration. Keep 1m away from the camera within 5 seconds after entering this function, so that the stitching calibration after the countdown is over is good.

Move 1m away from  
the camera in 5s

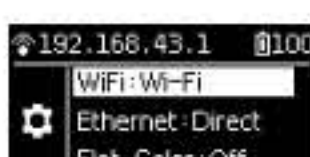
calibrating  
...

Move 1m away from  
the camera in 5s

# Learn about the setting of Insta360 Pro

## Setting of Camera's WIFI Mode:

Pro camera is provided with two WiFi connection ways: own AP hot point and connection with external wireless WiFi.



Set as AP, and then turn on WiFi key in the homepage. At this time, the icon indicating WiFi is on will be displayed on the top of the screen, and an IP address will appear there as well. In this case, the user may use the client end device to search for the camera AP nearby for connection. The default password is 88888888(i.e. eight 8).

Set as WiFi, namely the mode to connecting the external WiFi. Select WiFi key in the homepage, and press SETTING key, to enter the screen where the system is waiting for the user scanning the camera's WiFi information (SSID and password). The user may use the QR generation function of cell phone APP. Set SSID and password of the external WiFi to be connected, and generate a QR code for identification by the camera. After successful scanning, the camera will be automatically connected with the external network. Refer to the section about scanning of cell phone APP's QR code for details.

## Setting of Ethernet Network Cable Connection:

DHCP: used to connect Pro camera with a certain local area network, and acquire IP address in the network dynamically.

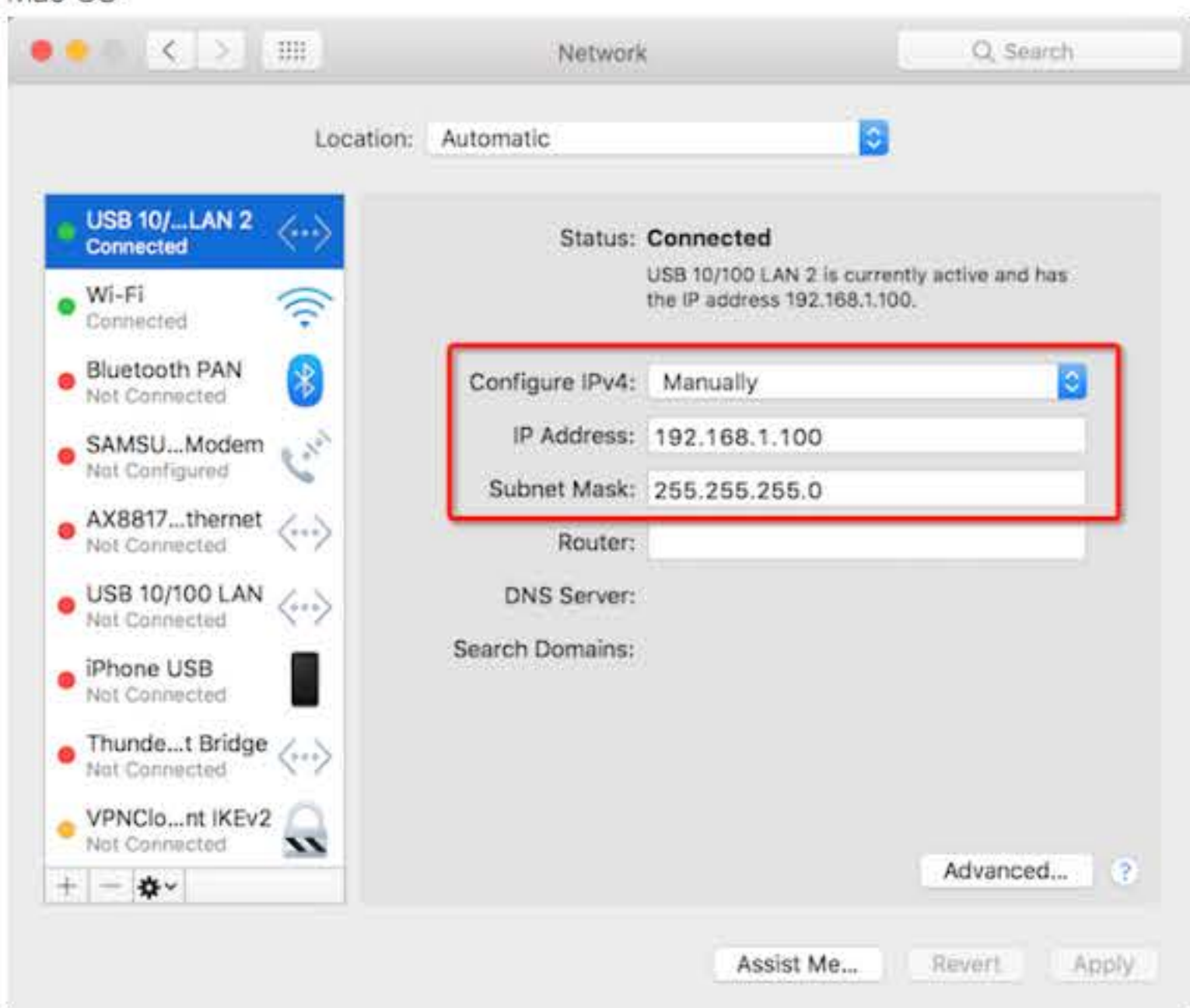
Direct: used to connect Pro camera with PC/laptop directly, and a fixed IP address will be allocated.

Specific usage:

1. Use the network cable to directly connect pro to the computer's network interface. If your computer does not have network cable interface, you can use the network cable and network card that delivered to you together with Pro to access to your computer's USB interface.

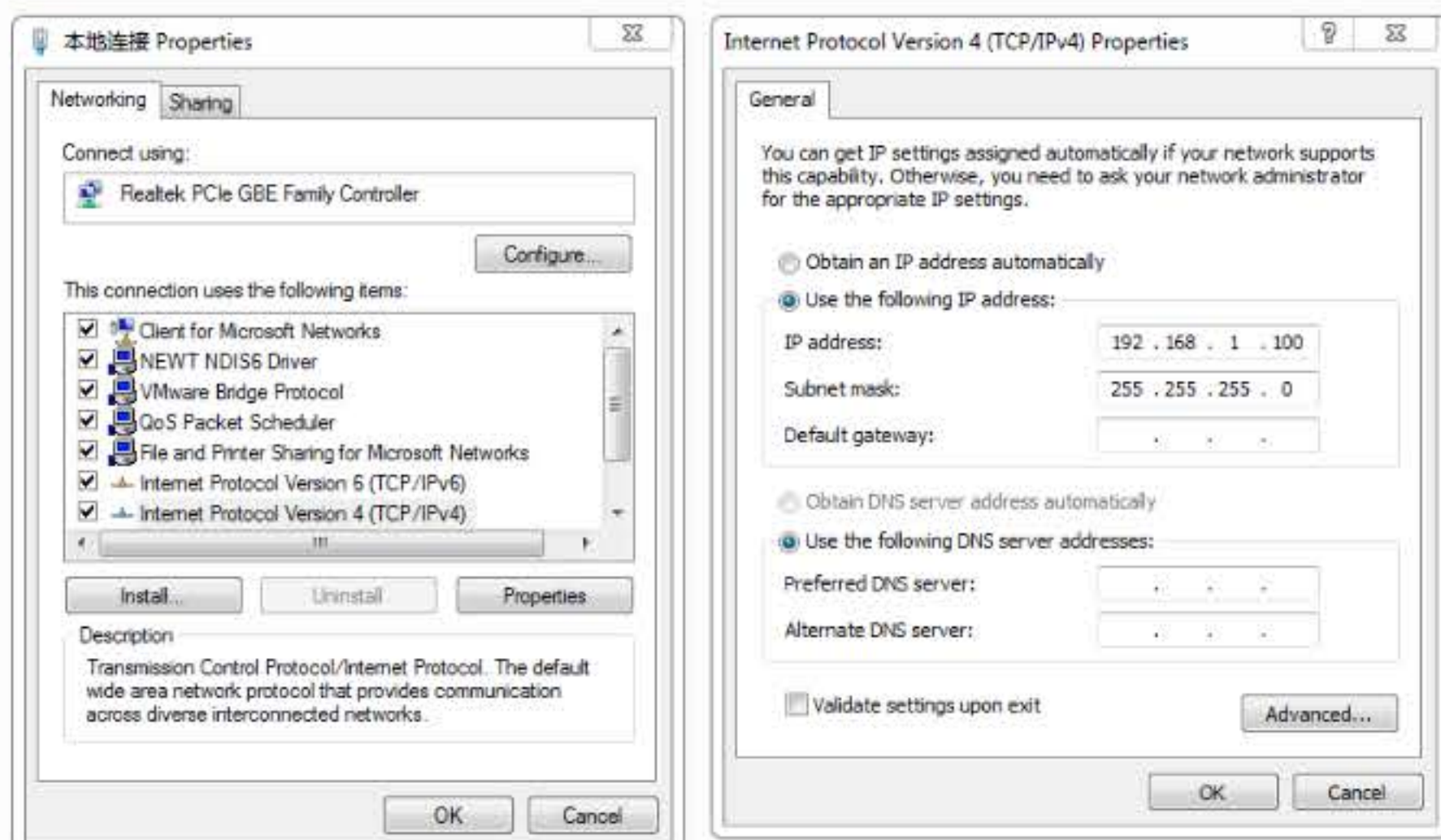
2. In pro's camera setting, choose "Direct" mode in the Ethernet option, the IP address on the top of the camera will display "192,168.1.188".

Mac OS:



1. Turn on network preference setting
2. Select USB network card network, set IPV4 option as "Manual", set the IP address as "192.168.1.100", set the subnet mask as "255.255.255.0"
3. Save the setting

Windows:

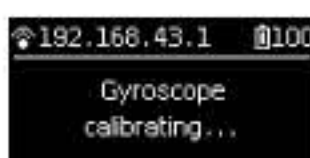


1. Open the local network, right click to select "property" in the menu, select IPV4 address settings in the pop-up interface.
2. Set the IP address as "192.168.1.100", set the subnet mask to "255.255.255.0".
3. Click "Save".
4. After completing the above steps, you can use the PC software to control Pro as usual.3. Set up the computer on the other end cable to let it obtain IP address automatically. Set computer and Pro on the same network segment.

**FlatColor:** FlatColor of video, after this function is enabled, the video image more applicable to subsequent processing will be obtained.

**Frequency:** used to set the refreshing frequency of a video image; 50Hz and 60Hz are respectively applicable to the areas with different power frequencies.

**Gyro Calibration function:** Pro camera supports that the gyro data records are used for anti-shaking and level calibration during shooting and subsequent processing. If the user found the level anti-shaking function of gyro is not good during preview and trial-shooting, it may be calibrated through this function.



**Storage:** storage management. The user may use this function to view the capacity of the current storage card or USB storage device. You can also select formatting or speed testing on the inserted device.

**LED:** LED switch, the user may use it to turn on or off the peripheral indicating lamps of the camera.

**Speaker:** Speaker switch, the user may use it to turn on or off the speaker of the camera.

**Info:** used to view the version information of hard firmware, system, etc. of the camera.

**Reset:** used to reset the Customize parameters recorded by the camera as the factory default.

# What are the camera main compositions?

To learn about the main compositions of Pro, Keys:



Interface:



Components:



## How to restore 'color space' by using Flat color for video?

The video shot by Flat color can later be processed by software such as Premiere, DaVinci and so on.

Download LUT ([Click to download Insta360 Pro.CUBE](#)) to restore color.

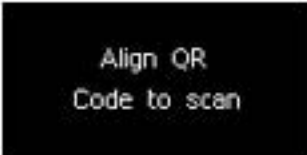
## HDMI output

When the camera enters any of the shooting mode, it is connected with the display device via HDMI in the READY state, and then the real-time stitched preview image will be displayed. Except preview states for HDMI live broadcast output and READY shooting mode, no HDMI preview image cannot be output.

---

## QR code scanning function

The camera may scan and identify the QR code generated by APP without connected with a cell phone. Make either of the lens on both sides of camera screen aligned with the QR code, after identified, the parameter may be saved into the “Customize” parameter level so that further operation may be carried out. You can hear a sound indicating the successful scanning if the scanning succeeds.



Align QR  
Code to scan

In the preparation mode of shooting, video recording or live video broadcast push flow, and press the SETTING key to enter the QR code scanning state. Please use the QR code generator of APP to set the corresponding parameters and generate a QR code for identification by the camera.

Select WiFi icon in the navigation bar of the homepage, and press the SETTING key to the QR state waiting for setting of scanning external WiFi information. Please use the QR code generator of APP to set SSID and password of external WiFi and generate a QR code for identification by the camera. After successful identification, the camera will automatically connect the completed external WiFi information.



WiFi connecting...